

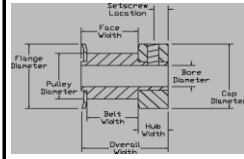
# 3MM HTD® Pitch Timing Belt Pulleys

## For 9MM Belts      Type CF and HF

Clear Anodized Aluminum Alloy

### ALL DIMENSIONS IN INCHES

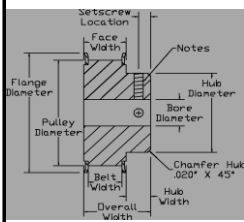
Code Number	# of Teeth	Pulley Type	Pulley Pitch Diam	Pulley Diam	Flange Diam +/- .020"	Cap Diam +/- .015"	Overall Width +/- .010"	Face Width +/- .010"	Belt Width +/- .005"	Cap Width +/- .015"	Setscrew Location +/- .015"	Setscrew Size	Stock Bore Diam +.001/- .000"
10-3HTD-09M	10	CF	.376	.346	.505	.505	.681	.446	.401	.235	.118	4-40*	1/8
11-3HTD-09M	11	CF	.414	.384	.530	.530	↓	↓	↓	↓	↓	4-40*	1/8
12-3HTD-09M	12	CF	.451	.421	.580	.580	↓	↓	↓	↓	↓	6-40**	3/16
13-3HTD-09M	13	CF	.489	.459	.610	.610	.691	.453	↓	.238	.119	6-40**	3/16
14-3HTD-09M	14	CF	.526	.496	.635	.635	↓	↓	↓	↓	↓	6-40**	3/16
15-3HTD-09M	15	CF	.564	.534	.685	.685	↓	↓	↓	↓	↓	6-40**	3/16
16-3HTD-09M	16	CF	.602	.572	.710	.710	↓	↓	↓	↓	↓	6-40**	3/16
17-3HTD-09M	17	CF	.639	.609	.740	.740	↓	↓	↓	↓	↓	6-40**	3/16



Type CF

### ALL DIMENSIONS IN INCHES

Code Number	# of Teeth	Pulley Type	Pulley Pitch Diam	Pulley Diam	Flange Diam +/- .020"	Hub Diam +/- .015"	Overall Width +/- .010"	Face Width +/- .010"	Belt Width +/- .005"	Hub Width +/- .015"	Setscrew Location +/- .015"	Setscrew Size	Stock Bore Diam +.001/- .000"
18-3HTD-09M	18	HF	.677	.647	.790	.442	.812	.506	.401	.306	.153	8-32**	1/4
19-3HTD-09M	19	HF	.714	.684	.827	.479	↓	↓	↓	↓	↓	8-32**	1/4
20-3HTD-09M	20	HF	.752	.722	.895	.500	↓	↓	↓	↓	↓	8-32**	1/4
22-3HTD-09M	22	HF	.827	.797	.945	.562	↓	↓	↓	↓	↓	8-32**	1/4
24-3HTD-09M	24	HF	.902	.872	1.025	.625	↓	↓	↓	↓	↓	8-32**	1/4
25-3HTD-09M	25	HF	.940	.910	1.060	.625	↓	↓	↓	↓	↓	8-32**	1/4
26-3HTD-09M	26	HF	.977	.947	1.105	.625	↓	↓	↓	↓	↓	8-32**	1/4
28-3HTD-09M	28	HF	1.053	1.023	1.173	.701	↓	↓	↓	↓	↓	8-32**	1/4
30-3HTD-09M	30	HF	1.128	1.098	1.250	.776	↓	↓	↓	↓	↓	8-32**	1/4
32-3HTD-09M	32	HF	1.203	1.173	1.323	.851	↓	↓	↓	↓	↓	8-32**	1/4
34-3HTD-09M	34	HF	1.278	1.248	1.398	.921	.833	.527	↓	↓	↓	8-32**	1/4
36-3HTD-09M	36	HF	1.353	1.323	1.473	1.000	↓	↓	↓	↓	↓	8-32**	1/4
38-3HTD-09M	38	HF	1.429	1.399	1.549	1.075	↓	↓	↓	↓	↓	8-32**	1/4
40-3HTD-09M	40	HF	1.504	1.474	1.625	1.150	↓	↓	↓	↓	↓	8-32**	1/4
44-3HTD-09M	44	HF	1.654	1.624	1.775	1.300	↓	↓	↓	↓	↓	8-32**	1/4



Type HF

P/N Construction: (Code Number) (Bore Diameter) (Type)(Material Code)

PULLEY DIAMETER TOLERANCES	NOTES
10 - 27 Teeth = +.002 / -.000	* One (1) setscrew furnished.
28 - 44 Teeth = +.003 / -.000	** Two (2) setscrews furnished at 90 degrees.
3HTD Working Depth = .048"	

Ph: (217) 428-9043  
Fx: (877) 1 FAX DSI



Email: info@DSIpulleys.com  
Website: www.DSIpulleys.com