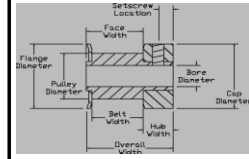


3MM HTD® Pitch Timing Belt Pulleys

For 6MM Belts Type CF and HF

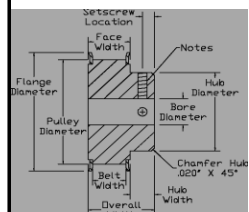
Clear Anodized Aluminum Alloy

ALL DIMENSIONS IN INCHES													
Code Number	# of Teeth	Pulley Type	Pulley Pitch Diam	Pulley Diam	Flange Diam +/- .020"	Cap Diam +/- .015"	Overall Width +/- .010"	Face Width +/- .010"	Belt Width +/- .005"	Cap Width +/- .015"	Setscrew Location +/- .015"	Setscrew Size	Stock Bore Diam + .001/- .000"
10-3HTD-06M	10	CF	.376	.346	.505	.505	.562	.327	.282	.235	.118	4-40*	1/8
11-3HTD-06M	11	CF	.414	.384	.530	.530	↓	↓	↓	↓	↓	4-40*	1/8
12-3HTD-06M	12	CF	.451	.421	.580	.580	↓	↓	↓	↓	↓	6-40*	3/16
13-3HTD-06M	13	CF	.489	.459	.610	.610	↓	↓	↓	↓	↓	6-40**	3/16
14-3HTD-06M	14	CF	.526	.496	.635	.635	↓	↓	↓	↓	↓	6-40**	3/16
15-3HTD-06M	15	CF	.564	.534	.685	.685	↓	↓	↓	↓	↓	6-40**	3/16
16-3HTD-06M	16	CF	.602	.572	.710	.710	↓	↓	↓	↓	↓	6-40**	3/16
17-3HTD-06M	17	CF	.639	.609	.740	.740	↓	↓	↓	↓	↓	6-40**	3/16



Type CF

ALL DIMENSIONS IN INCHES													
Code Number	# of Teeth	Pulley Type	Pulley Pitch Diam	Pulley Diam	Flange Diam +/- .020"	Hub Diam +/- .015"	Overall Width +/- .010"	Face Width +/- .010"	Belt Width +/- .005"	Hub Width +/- .015"	Setscrew Location +/- .015"	Setscrew Size	Stock Bore Diam + .001/- .000"
18-3HTD-06M	18	HF	.677	.647	.790	.442	.691	.386	.282	.305	.153	8-32**	1/4
19-3HTD-06M	19	HF	.714	.684	.827	.479	↓	↓	↓	↓	↓	8-32**	1/4
20-3HTD-06M	20	HF	.752	.722	.895	.500	↓	↓	↓	↓	↓	8-32**	1/4
22-3HTD-06M	22	HF	.827	.797	.945	.562	↓	↓	↓	↓	↓	8-32**	1/4
24-3HTD-06M	24	HF	.902	.872	1.025	.625	↓	↓	↓	↓	↓	8-32**	1/4
25-3HTD-06M	25	HF	.940	.910	1.060	.625	↓	↓	↓	↓	↓	8-32**	1/4
26-3HTD-06M	26	HF	.977	.947	1.105	.625	↓	↓	↓	↓	↓	8-32**	1/4
28-3HTD-06M	28	HF	1.053	1.023	1.173	.701	↓	↓	↓	↓	↓	8-32**	1/4
30-3HTD-06M	30	HF	1.128	1.098	1.250	.776	↓	↓	↓	↓	↓	8-32**	1/4
32-3HTD-06M	32	HF	1.203	1.173	1.323	.851	↓	↓	↓	↓	↓	8-32**	1/4
34-3HTD-06M	34	HF	1.278	1.248	1.398	.921	.713	.407	↓	.306	.153	8-32**	1/4
36-3HTD-06M	36	HF	1.353	1.323	1.473	1.000	↓	↓	↓	↓	↓	8-32**	1/4
38-3HTD-06M	38	HF	1.429	1.399	1.549	1.075	↓	↓	↓	↓	↓	8-32**	1/4
40-3HTD-06M	40	HF	1.504	1.474	1.625	1.150	↓	↓	↓	↓	↓	8-32**	1/4
44-3HTD-06M	44	HF	1.654	1.624	1.775	1.300	↓	↓	↓	↓	↓	8-32**	1/4



Type HF

P/N Construction: (Code Number) (Bore Diameter) (Type)(Material Code)

<p style="text-align: center;">PULLEY DIAMETER TOLERANCES</p> <p>10 - 27 Teeth = +.002 / -.000</p> <p>28 - 34 Teeth = +.003 / -.000</p> <p>3HTD Working Depth = .048"</p>	<p style="text-align: center;">NOTES</p> <p>* One (1) setscrew furnished.</p> <p>** Two (2) setscrews furnished at 90 degrees.</p>
--	---

Ph: (217) 428-9043
 Fx: (877) 1 FAX DSI



Email: info@DSIpulleys.com
 Website: www.DSIpulleys.com

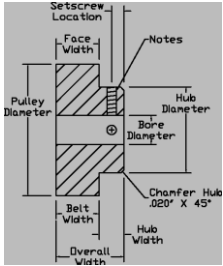
3MM HTD® Pitch Timing Belt Pulleys

For 6MM Belts Type H

Clear Anodized Aluminum Alloy

ALL DIMENSIONS IN INCHES

Code Number	# of Teeth	Type	Pulley Pitch Diam	Pulley Diam	Hub Diam +/- .015"	Overall Width +/- .010"	Face Width +/- .010"	Belt Width +/- .010"	Hub Width +/- .015"	Setscrew Location +/- .015"	Setscrew Size	Stock Bore Diam +.001/- .000"
18-3HTD-06M	18	H	.677	.647	.442	.691	.386	.386	.305	.153	8-32**	1/4
19-3HTD-06M	19	H	.714	.684	.468	↓	↓	↓	↓	↓	8-32**	1/4
20-3HTD-06M	20	H	.752	.722	.500	↓	↓	↓	↓	↓	8-32**	1/4
22-3HTD-06M	22	H	.827	.797	.562	↓	↓	↓	↓	↓	8-32**	1/4
24-3HTD-06M	24	H	.902	.872	.625	↓	↓	↓	↓	↓	8-32**	1/4
25-3HTD-06M	25	H	.940	.910	.625	↓	↓	↓	↓	↓	8-32**	1/4
26-3HTD-06M	26	H	.977	.947	.625	↓	↓	↓	↓	↓	8-32**	1/4
28-3HTD-06M	28	H	1.053	1.023	.701	↓	↓	↓	↓	↓	8-32**	1/4
30-3HTD-06M	30	H	1.128	1.098	.776	↓	↓	↓	↓	↓	8-32**	1/4
32-3HTD-06M	32	H	1.203	1.173	.851	↓	↓	↓	↓	↓	8-32**	1/4
34-3HTD-06M	34	H	1.278	1.248	.921	.713	.407	.407	.306	.153	8-32**	1/4
36-3HTD-06M	36	H	1.353	1.323	1.000	↓	↓	↓	↓	↓	8-32**	1/4
38-3HTD-06M	38	H	1.429	1.399	1.075	↓	↓	↓	↓	↓	8-32**	1/4
40-3HTD-06M	40	H	1.504	1.474	1.150	↓	↓	↓	↓	↓	8-32**	1/4
44-3HTD-06M	44	H	1.654	1.624	1.300	↓	↓	↓	↓	↓	8-32**	1/4
48-3HTD-06M	48	H	1.805	1.775	1.250	.734	↓	↓	.327	.164	8-32**	5/16
50-3HTD-06M	50	H	1.880	1.850	↓	↓	↓	↓	↓	↓	8-32**	5/16
56-3HTD-06M	56	H	2.105	2.075	↓	↓	↓	↓	↓	↓	8-32**	5/16
60-3HTD-06M	60	H	2.256	2.226	↓	↓	↓	↓	↓	↓	8-32**	5/16
62-3HTD-06M	62	H	2.331	2.301	↓	↓	↓	↓	↓	↓	8-32**	5/16
72-3HTD-06M	72	H	2.707	2.677	↓	↓	↓	↓	↓	↓	8-32**	5/16



Type H

P/N Construction: (Code Number) (Bore Diameter) (Type)(Material Code)

<p style="text-align: center;">PULLEY DIAMETER TOLERANCES</p> <p>18 - 27 Teeth = +.002 / -.000 28 - 52 Teeth = +.003 / -.000 53 - 72 Teeth = +.004 / -.000</p> <p>3HTD Working Depth = .048"</p>	<p style="text-align: center;">NOTES</p> <p>* One (1) setscrew furnished. ** Two (2) setscrews furnished at 90 degrees.</p>
---	---

Ph: (217) 428-9043
 Fx: (877) 1 FAX DSI



Email: info@DSIpulleys.com
 Website: www.DSIpulleys.com

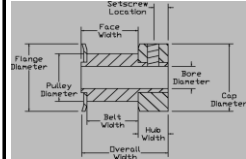
3MM HTD® Pitch Timing Belt Pulleys

For 9MM Belts Type CF and HF

Clear Anodized Aluminum Alloy

ALL DIMENSIONS IN INCHES

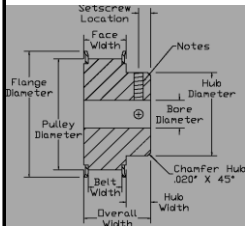
Code Number	# of Teeth	Pulley Type	Pulley Pitch Diam	Pulley Diam	Flange Diam +/- .020"	Cap Diam +/- .015"	Overall Width +/- .010"	Face Width +/- .010"	Belt Width +/- .005"	Cap Width +/- .015"	Setscrew Location +/- .015"	Setscrew Size	Stock Bore Diam +.001/- .000"
10-3HTD-09M	10	CF	.376	.346	.505	.505	.681	.446	.401	.235	.118	4-40*	1/8
11-3HTD-09M	11	CF	.414	.384	.530	.530	↓	↓	↓	↓	↓	4-40*	1/8
12-3HTD-09M	12	CF	.451	.421	.580	.580	↓	↓	↓	↓	↓	6-40**	3/16
13-3HTD-09M	13	CF	.489	.459	.610	.610	.691	.453	↓	.238	.119	6-40**	3/16
14-3HTD-09M	14	CF	.526	.496	.635	.635	↓	↓	↓	↓	↓	6-40**	3/16
15-3HTD-09M	15	CF	.564	.534	.685	.685	↓	↓	↓	↓	↓	6-40**	3/16
16-3HTD-09M	16	CF	.602	.572	.710	.710	↓	↓	↓	↓	↓	6-40**	3/16
17-3HTD-09M	17	CF	.639	.609	.740	.740	↓	↓	↓	↓	↓	6-40**	3/16



Type CF

ALL DIMENSIONS IN INCHES

Code Number	# of Teeth	Pulley Type	Pulley Pitch Diam	Pulley Diam	Flange Diam +/- .020"	Hub Diam +/- .015"	Overall Width +/- .010"	Face Width +/- .010"	Belt Width +/- .005"	Hub Width +/- .015"	Setscrew Location +/- .015"	Setscrew Size	Stock Bore Diam +.001/- .000"
18-3HTD-09M	18	HF	.677	.647	.790	.442	.812	.506	.401	.306	.153	8-32**	1/4
19-3HTD-09M	19	HF	.714	.684	.827	.479	↓	↓	↓	↓	↓	8-32**	1/4
20-3HTD-09M	20	HF	.752	.722	.895	.500	↓	↓	↓	↓	↓	8-32**	1/4
22-3HTD-09M	22	HF	.827	.797	.945	.562	↓	↓	↓	↓	↓	8-32**	1/4
24-3HTD-09M	24	HF	.902	.872	1.025	.625	↓	↓	↓	↓	↓	8-32**	1/4
25-3HTD-09M	25	HF	.940	.910	1.060	.625	↓	↓	↓	↓	↓	8-32**	1/4
26-3HTD-09M	26	HF	.977	.947	1.105	.625	↓	↓	↓	↓	↓	8-32**	1/4
28-3HTD-09M	28	HF	1.053	1.023	1.173	.701	↓	↓	↓	↓	↓	8-32**	1/4
30-3HTD-09M	30	HF	1.128	1.098	1.250	.776	↓	↓	↓	↓	↓	8-32**	1/4
32-3HTD-09M	32	HF	1.203	1.173	1.323	.851	↓	↓	↓	↓	↓	8-32**	1/4
34-3HTD-09M	34	HF	1.278	1.248	1.398	.921	.833	.527	↓	↓	↓	8-32**	1/4
36-3HTD-09M	36	HF	1.353	1.323	1.473	1.000	↓	↓	↓	↓	↓	8-32**	1/4
38-3HTD-09M	38	HF	1.429	1.399	1.549	1.075	↓	↓	↓	↓	↓	8-32**	1/4
40-3HTD-09M	40	HF	1.504	1.474	1.625	1.150	↓	↓	↓	↓	↓	8-32**	1/4
44-3HTD-09M	44	HF	1.654	1.624	1.775	1.300	↓	↓	↓	↓	↓	8-32**	1/4



Type HF

P/N Construction: (Code Number) (Bore Diameter) (Type)(Material Code)

PULLEY DIAMETER TOLERANCES	NOTES
10 - 27 Teeth = +.002 / -.000	* One (1) setscrew furnished.
28 - 44 Teeth = +.003 / -.000	** Two (2) setscrews furnished at 90 degrees.
3HTD Working Depth = .048"	

Ph: (217) 428-9043
Fx: (877) 1 FAX DSI



Email: info@DSIpulleys.com
Website: www.DSIpulleys.com

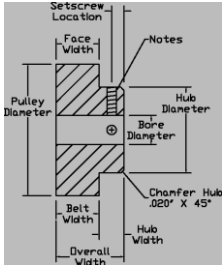
3MM HTD® Pitch Timing Belt Pulleys

For 9MM Belts Type H

Clear Anodized Aluminum Alloy

ALL DIMENSIONS IN INCHES

Code Number	# of Teeth	Type	Pulley Pitch Diam	Pulley Diam	Hub Diam +/- .015"	Overall Width +/- .010"	Face Width +/- .010"	Belt Width +/- .010"	Hub Width +/- .015"	Setscrew Location +/- .015"	Setscrew Size	Stock Bore Diam +.001/- .000"
18-3HTD-09M	18	H	.677	.647	.442	.812	.506	.506	.306	.153	8-32**	1/4
19-3HTD-09M	19	H	.714	.684	.468	↓	↓	↓	↓	↓	8-32**	1/4
20-3HTD-09M	20	H	.752	.722	.500	↓	↓	↓	↓	↓	8-32**	1/4
22-3HTD-09M	22	H	.827	.797	.562	↓	↓	↓	↓	↓	8-32**	1/4
24-3HTD-09M	24	H	.902	.872	.625	↓	↓	↓	↓	↓	8-32**	1/4
25-3HTD-09M	25	H	.940	.910	.625	↓	↓	↓	↓	↓	8-32**	1/4
26-3HTD-09M	26	H	.977	.947	.625	↓	↓	↓	↓	↓	8-32**	1/4
28-3HTD-09M	28	H	1.053	1.023	.701	↓	↓	↓	↓	↓	8-32**	1/4
30-3HTD-09M	30	H	1.128	1.098	.776	↓	↓	↓	↓	↓	8-32**	1/4
32-3HTD-09M	32	H	1.203	1.173	.851	↓	↓	↓	↓	↓	8-32**	1/4
34-3HTD-09M	34	H	1.278	1.248	.921	.834	.527	.527	.307	.153	8-32**	1/4
36-3HTD-09M	36	H	1.353	1.323	1.000	↓	↓	↓	↓	↓	8-32**	1/4
38-3HTD-09M	38	H	1.429	1.399	1.075	↓	↓	↓	↓	↓	8-32**	1/4
40-3HTD-09M	40	H	1.504	1.474	1.150	↓	↓	↓	↓	↓	8-32**	1/4
44-3HTD-09M	44	H	1.654	1.624	1.300	↓	↓	↓	↓	↓	8-32**	1/4
48-3HTD-09M	48	H	1.805	1.775	1.250	.875	.500	.500	.375	.188	8-32**	5/16
50-3HTD-09M	50	H	1.880	1.850	↓	↓	↓	↓	↓	↓	8-32**	5/16
56-3HTD-09M	56	H	2.105	2.075	↓	↓	↓	↓	↓	↓	8-32**	5/16
60-3HTD-09M	60	H	2.256	2.226	↓	↓	↓	↓	↓	↓	8-32**	5/16
62-3HTD-09M	62	H	2.331	2.301	↓	↓	↓	↓	↓	↓	8-32**	5/16
72-3HTD-09M	72	H	2.707	2.677	↓	↓	↓	↓	↓	↓	8-32**	5/16



Type H

P/N Construction: (Code Number) (Bore Diameter) (Type)(Material Code)

<p>PULLEY DIAMETER TOLERANCES</p> <p>18 - 27 Teeth = +.002 / -.000 28 - 52 Teeth = +.003 / -.000 53 - 72 Teeth = +.004 / -.000</p> <p>3HTD Working Depth = .048"</p>	<p>NOTES</p> <p>* One (1) setscrew furnished. ** Two (2) setscrews furnished at 90 degrees.</p>
---	---

Ph: (217) 428-9043
 Fx: (877) 1 FAX DSI



Email: info@DSIpulleys.com
 Website: www.DSIpulleys.com